

Flood Zones



Zone Description

A - An area inundated by 100-year flooding, for which no base flood elevations have been determined.

AE - An area inundated by 100-year flooding, for which base flood elevations have been determined.

AH - An area inundated by 100-year flooding, (usually areas of ponding), for which base flood elevations have been determined. Flood depths range from 1 to 3 feet.

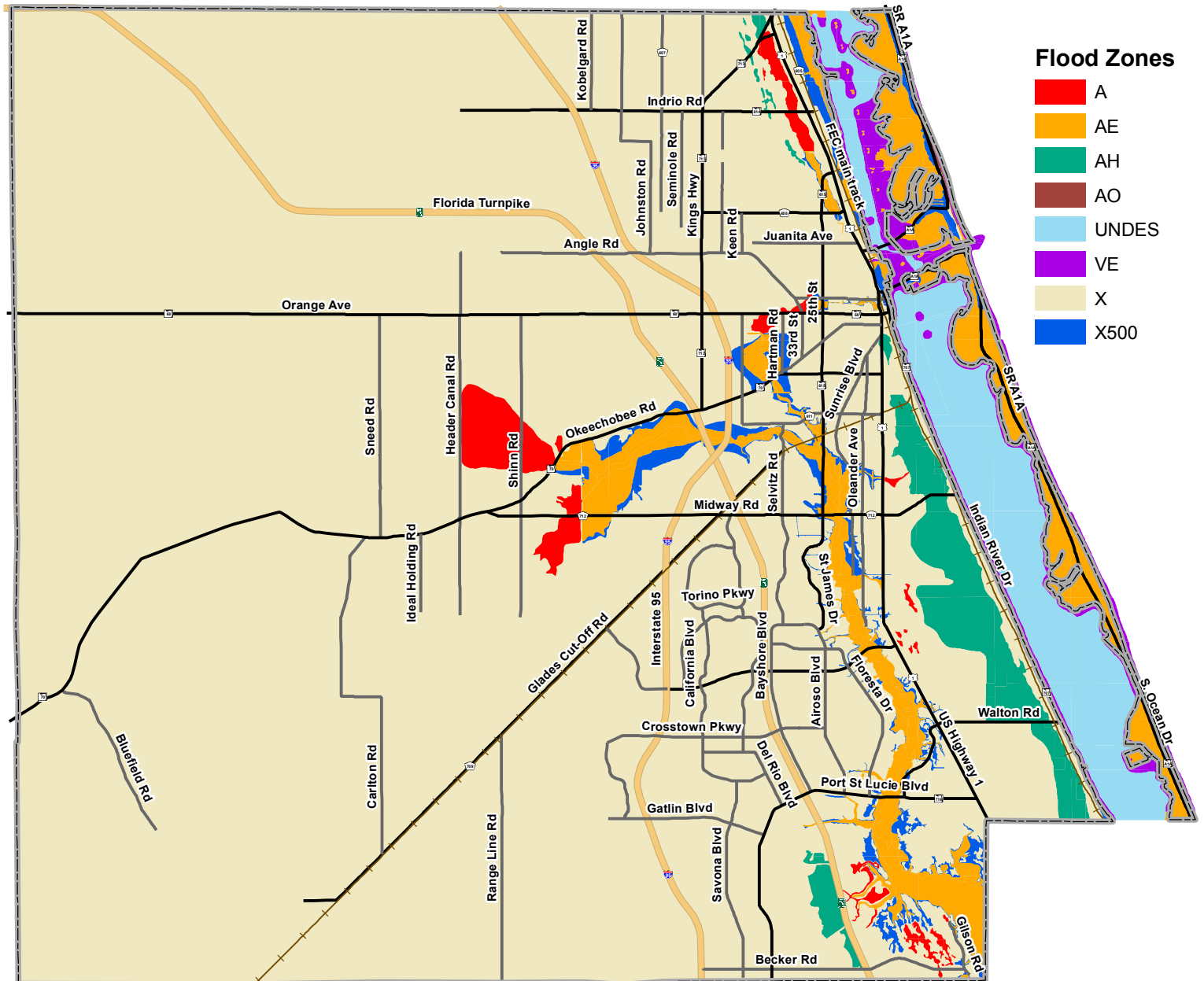
AO - An alluvial fan inundated by 100-year flooding (usually sheet flow on sloping terrain), for which average flood depths and velocities have been determined; flood depths range from 1 to 3 feet.

VE - An area inundated by 100-year flooding with velocity hazard (wave action); base flood elevations have been determined.

FW - Floodway areas in Zone AE.

X-500 - An area inundated by 500-year flooding; an area inundated by 100-year flooding with average depths of less than 1 foot or with drainage areas less than 1 square mile; or an area protected by levees from 100-year flooding.

Table by: Department of Environmental Protection



Flood Zones

- A
- AE
- AH
- AO
- UNDES
- VE
- X
- X500

